

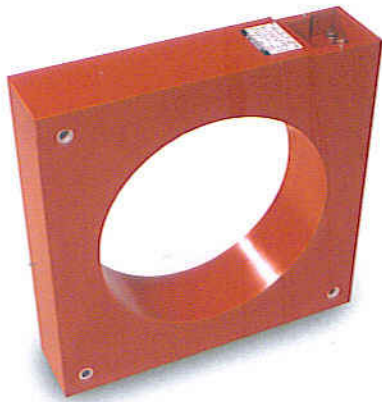
# Ring core current transformers



PFIFFNER Instrument Transformers Ltd. has been producing instrument transformers for more than 80 years. The transformers perform their tasks in electric plant – day and night, summer and winter. Our instrument transformers meet the requirements of our international customers and are designed for a service life of 40 years.

PFIFFNER produces ring core current transformers for every measurement and protection application. Various lines of products meet customer-specific requirements for both indoor applications as well as those for outdoor operation.

Thanks to selected core materials and proven designs, precise metering classes are available for all transformer models even for low primary currents. The ring core current transformers can be calibrated in our certified laboratories to meet customer requirements.



1

## Current transformer JK

- Slip-over current transformer for indoor applications
- suitable for mounting on insulated high-voltage cables
- primary current up to 4'000 A
- large variety of geometrical configurations
- cast in polyurethane
- high voltage insulation is provided by the cable
- user-defined positioning



2

## Current transformer JKS-S

- split-core current transformer for indoor applications
- suitable for mounting on insulated high-voltage cables
- primary current to 2'000 A
- versions for various cable diameters
- polycarbonate housing, cast in polyurethane
- high voltage insulation is provided by the cable
- user-defined positioning



3

## Current transformer JKG, JKSG

- slip-over or split-core current transformer for indoor applications
- suitable for mounting on insulated high-voltage cables
- primary current to 2'000 A
- versions for various cable diameters
- aluminium case for protection
- high voltage insulation is provided by the cable
- user-defined positioning

Suitable for billing measurements

[1, 2, 3, 4, 5, 6]



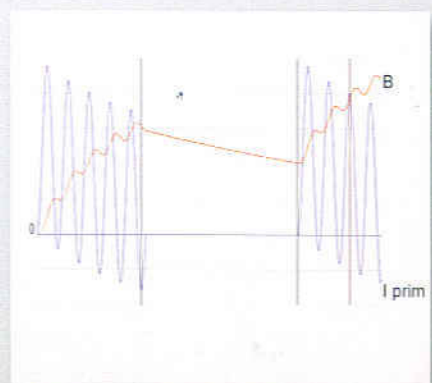
Can be installed in existing plant in a simple way during operation

[2, 3]



Also available for protection classes with transient specifications (TPX, TPY, TPZ)

[1, 3, 4, 5, 6]







4

## Current transformer JKF

- ring core current transformer for indoor or outdoor applications
- suitable for mounting on cables or bushings
- primary current up to 4'000 A
- large variety of geometrical configurations
- encapsulated in cycloaliphatic epoxy resin for outdoor applications
- high voltage insulation is provided by the cable or bushing
- user-defined positioning



5

## Current transformer AKA

- current transformer for high-current applications
- suitable for air-insulated generator feeders
- primary current up to 40'000 A
- diameter in accordance with level of insulation
- encapsulated in epoxy resin
- high voltage insulation is provided by the air-gap between primary conductor and current transformer
- user-defined positioning



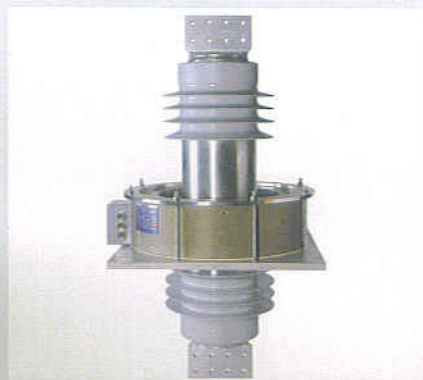
6

## Current transformer ALG

- current transformer for high-current applications
- suitable for mounting on high-current bushings
- primary current to 40'000 A
- high voltage insulation is provided by the bushing
- user-defined positioning

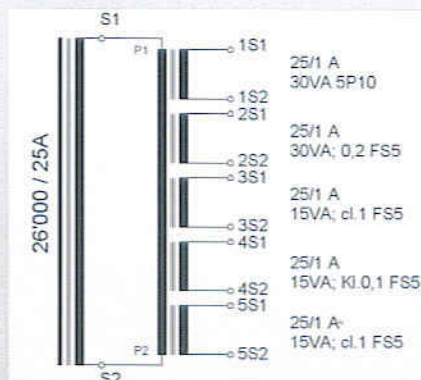
Available as bushing current transformer (Outdoor – outdoor, indoor – indoor, outdoor – indoor)

[4]



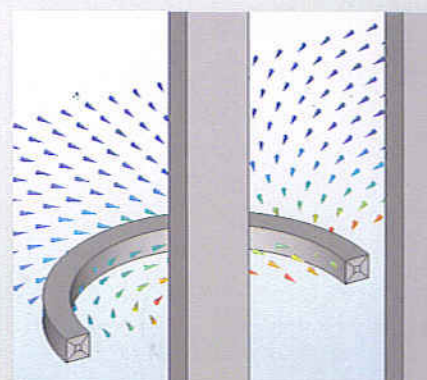
Current transformer cascades for multiple use of the high-current transformer core saves space and costs

[5, 6]

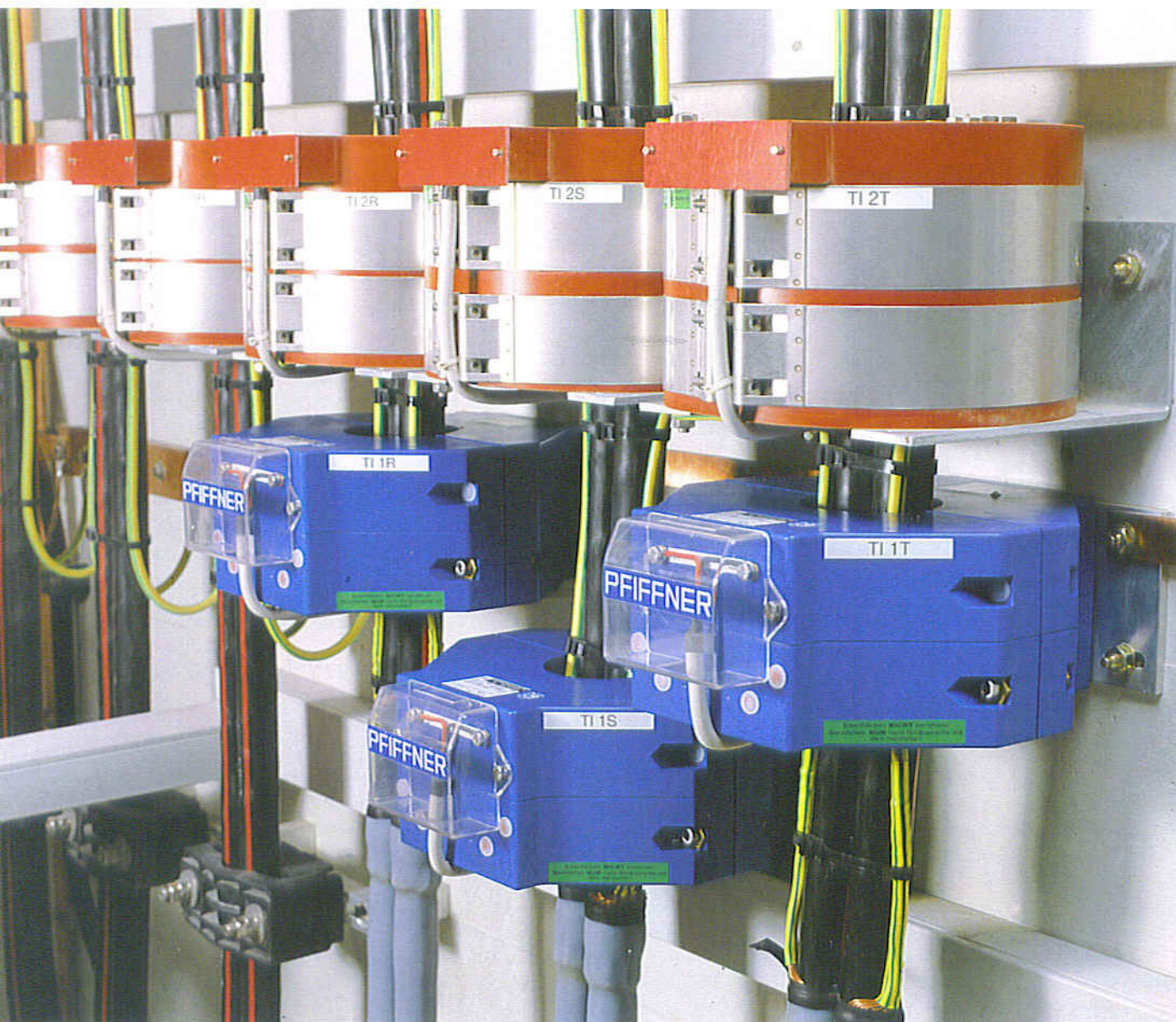


Magnetic influences caused by return conductors and neighbouring phases are taken into account

[1, 2, 3, 4, 5, 6]







**PFIFFNER**  
Instrument Transformers Ltd  
CH-5042 Hirschthal

Phone +41 (0)62 739 28 28  
Telefax +41 (0)62 739 28 10  
E-Mail sales@pmw.ch  
Internet www.pmw.ch

PFIFFNER Instrument Transformers Ltd is the only instrument transformer manufacturer in Switzerland. This internationally successful, family-owned company employs around 200 employees in its main facility.

PFIFFNER offers highest quality, maintenance-free, long-life products and innovative solutions. With production facilities on three continents, we cater for the requirements of the particular locations and, in this way, emphasise our customer proximity. Our business philosophy includes a clear commitment to Europe as a production location.

This is why our employees identify themselves with our products and our customers. On the part of our customers, we enjoy their high esteem, loyalty and satisfaction. In this way, we stress the importance of our motto "true values".

**PFIFFNER**

+ true values